

4.0 BRICELAND COMMUNITY SERVICES DISTRICT

TABLE OF CONTENTS

| | | |
|-----|---|------|
| 4.1 | District Background | 4-2 |
| | Agency Overview | 4-2 |
| | District Principal Act | 4-2 |
| | Formation and Development | 4-2 |
| | Boundary and Sphere of Influence..... | 4-4 |
| | Land Use and Zoning | 4-4 |
| | Growth and Population | 4-6 |
| | Disadvantaged Unincorporated Communities..... | 4-6 |
| | Hazards | 4-6 |
| 4.2 | Municipal Services..... | 4-7 |
| | Water Services..... | 4-7 |
| | Other Service Providers..... | 4-9 |
| 4.3 | Governance & Finance | 4-9 |
| | Governance | 4-9 |
| | Staffing | 4-10 |
| | Accountability and Transparency..... | 4-10 |
| | Financial Overview | 4-10 |
| | Grant Funding..... | 4-12 |
| 4.4 | Briceland MSR Determinations | 4-13 |
| 4.5 | Briceland SOI Determinations | 4-15 |

List of Figures

| | | |
|-------------|-----------------------------|-----|
| Figure 4-1: | Briceland CSD Boundary..... | 4-3 |
| Figure 4-2: | Briceland CSD Land Use..... | 4-5 |

List of Tables

| | | |
|------------|---|------|
| Table 4-1: | Contact Information | 4-2 |
| Table 4-2: | Board of Directors | 4-10 |
| Table 4-3: | Briceland Annual Budget Summary..... | 4-11 |
| Table 4-4: | Briceland CSD State Controller Summary..... | 4-11 |

4.1 DISTRICT BACKGROUND

Agency Overview

The Briceland Community Services District (CSD or District) provides water services to the community of Briceland approximately 5 miles west of Redway and 15 miles east of Shelter Cove along Briceland Thorne Road. The area is noted by rolling hills, steep ravines, and streams that primarily flow into Redwood Creek. The area surrounding Briceland is comprised of mixed conifer (predominantly redwood and Douglas fir), mixed hardwood forest, and a small amount of grassland and prairie. The District is on the ancestral tribal lands of the Sinkiyone people.

Table 4-1: Contact Information

| | |
|------------------------|---|
| Primary Contact | Chestine Anderson |
| E-mail | bandon48@gmail.com |
| Address | 1 Miller Creek Road, Garberville CA 95542 |
| Phone | 707-923-1385 |
| Website | N/A |

District Principal Act

The District's principal act is the Community Services District Law (Government Code §61000, et seq.) which authorizes CSDs to provide up to 31 types of governmental services within their boundaries. Briceland CSD is authorized to provide water services only. Other services, facilities, functions, or powers enumerated in the District's principal act but not identified in the formation resolution are "latent," meaning that they are authorized by the principal act under which the District is formed but are not being exercised. Latent powers and services activation require LAFCo authorization as indicated in Government Code §56824.10-14.

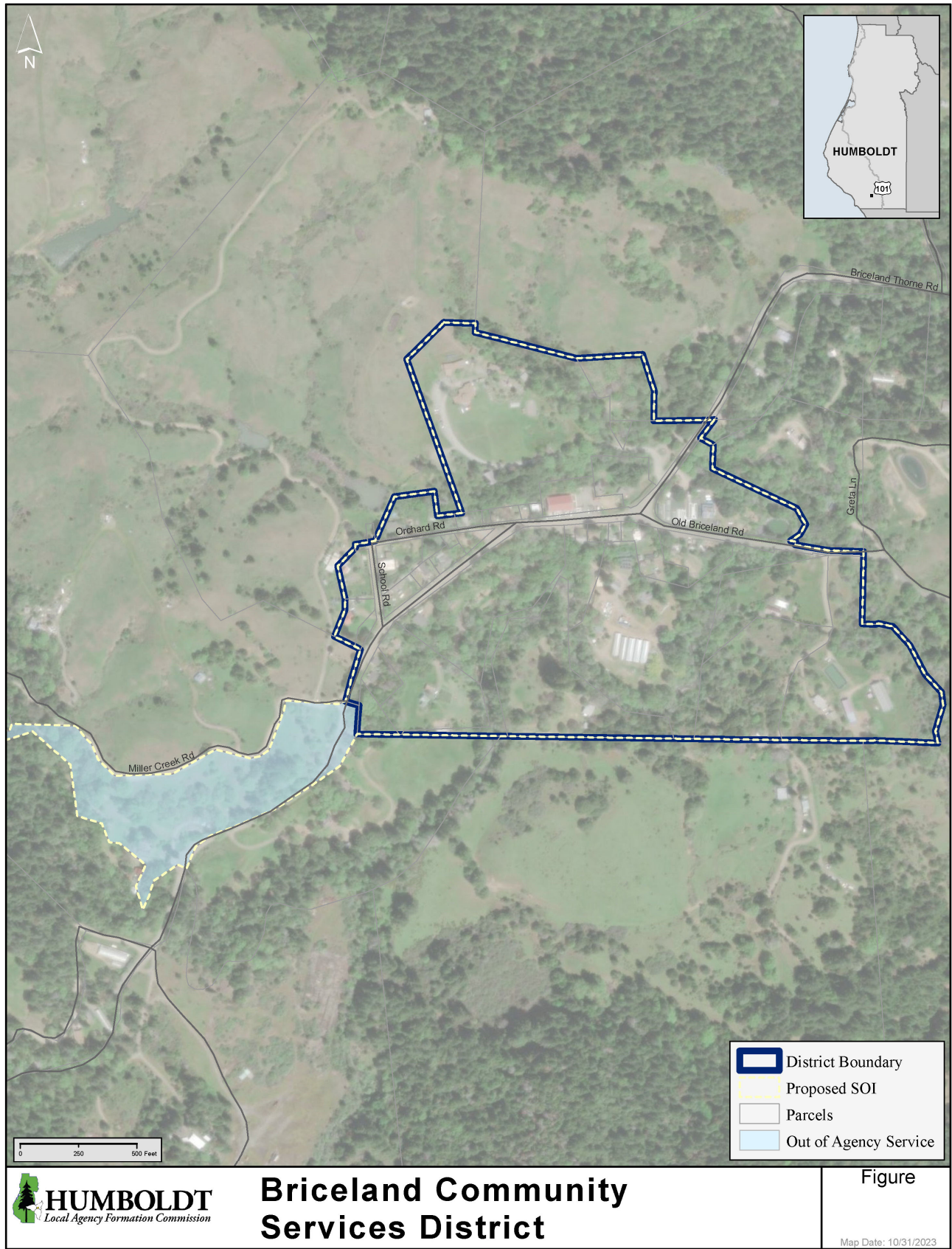
Formation and Development

Briceland CSD was formed as an independent special district on September 20, 1989, under the Community Services District law for the purposes of improving the water system supplying water to houses in the Briceland area¹. The application was filed by petition of more than 80% of the registered voters within the district, which allowed for the election to be waived. The district formation was approved by LAFCo on March 22, 1989 (Resolution No. 89-02) and the Board of Supervisors serving in their capacity as conducting authority ordered the formation without election on July 11, 1989 (Resolution No. 89-112).

The original water system was put in by J. W. Bowdin in 1904-1905 when a diphtheria epidemic threatened Briceland. In forming the Briceland CSD, proponents planned on using State Safe Drinking Water Grant Funds to identify additional water sources and develop two 21,000-gallon water tanks. New treatment and distribution facilities were also proposed. Those plans were changed to one 42,000-gallon cement storage tank and no additional water sources were found. Since its formation, the District has remained largely unchanged.

¹ Certificate of Completion recorded document #1989-19121; includes LAFCo Resolution No. 89-02, adopted on March 22, 1989

Figure 4-1: Briceland CSD Boundary



Boundary and Sphere of Influence

The District's boundary ~~and coterminous SOI~~ encompasses a total of 69.6 acres (Figure X). Within the District boundary there are less than 40 parcels, the majority of which are developed with rural residences ~~and ranches or remain undeveloped~~. Somerville Creek meets Redwood Creek along the eastern boundary of the District. The southern border stretches from Somerville Creek across to Briceland Thorne Road. ~~The District is southwest of Redway following Briceland Thorne Road. The boundary encompasses small residential areas and agriculture.~~

~~There is one parcel located outside the District boundary that is served by Briceland CSD. This parcel (APN 220-061-028) was historically served by the Briceland water system prior to formation of the District in 1989. While the application for formation, as originally submitted, included this parcel for inclusion in the district, it was subsequently removed as it was believed to not be contiguous with proposed District boundaries. The subject parcel is 12.52 acres in size, has a General Plan land use designation of Residential Agriculture (RA 5-20) and is zoned Forestry Recreation (FR-B-5(10)), and is improved with two dwellings. The water meter is located on the northeast corner of the parcel near Miller Creek Road and Briceland Throne Road.~~

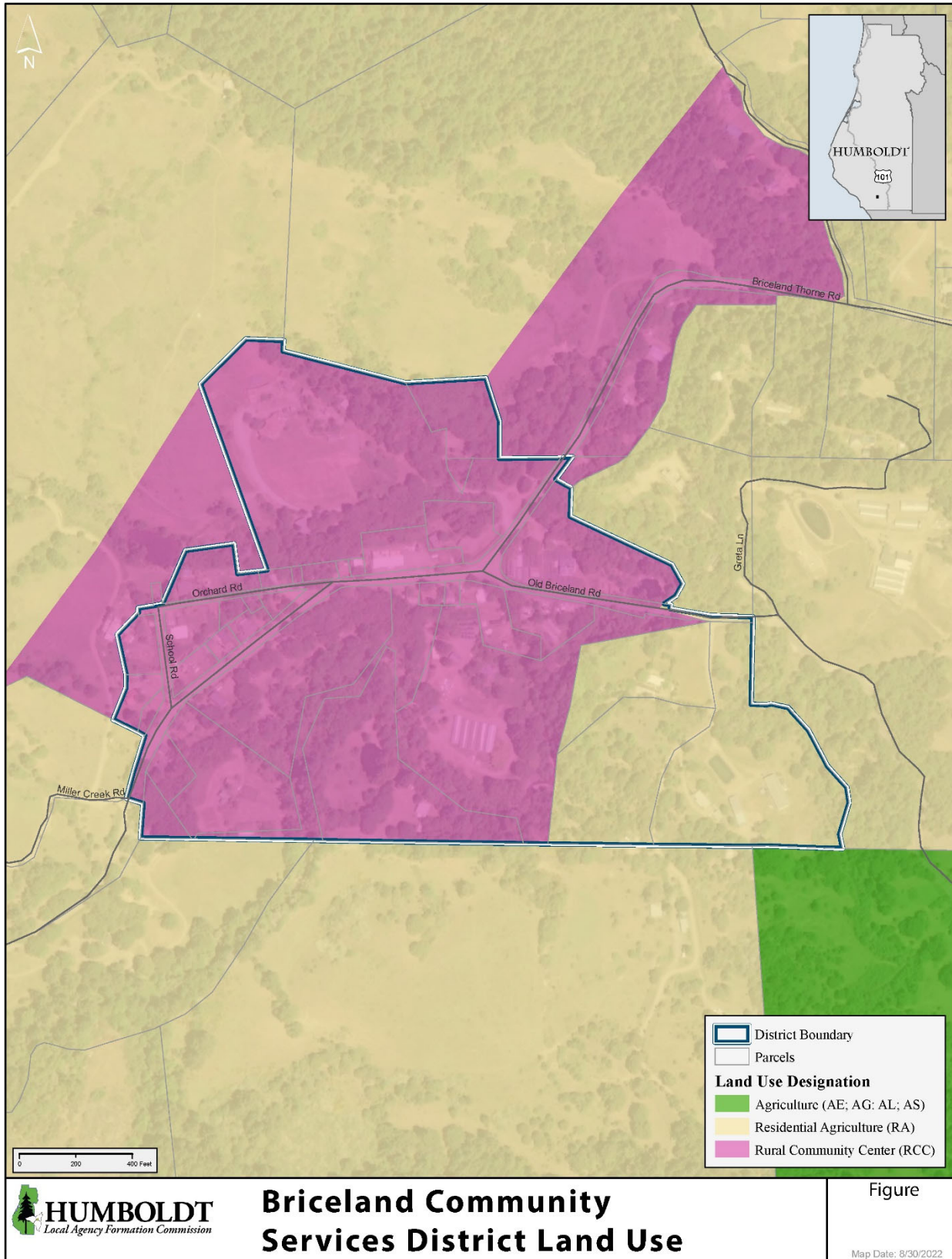
~~Currently, Briceland CSD's adopted sphere of influence is coterminous with its jurisdictional boundary, which indicates that there is no anticipated need for services outside the boundaries of the agency. Considering the District provides water service to existing residential uses on APN 220-061-028, which is developed and cannot be further subdivided under current land use and zoning, a sphere amendment is proposed to include this parcel within the District's SOI.~~

Land Use and Zoning

The land use in the District is subject to the Humboldt County General Plan and Zoning Regulations (Humboldt County Code Title III, Division 1). The District's land use under the Humboldt County General Plan is Rural Community Center (RCC) and Residential Agriculture (RA). ~~The RCC classification is intended to be applied to small unincorporated towns and community centers which provide a variety of community and tourist-oriented goods and services, but which may not have developed identifiable commercial or residential districts. The density range for RCC is 1 du/2.5 ac with no services or 1 du/ac with community water and sewer. Urban development standards should apply when public water or sewer services are extended. The RA designation applies to large lot residential uses that typically rely upon on-site water and wastewater systems. Varying densities are reflective of land capabilities and/or compatibility issues.~~

Under Humboldt County Zoning Regulations, the District's zoning is Unclassified (U), Neighborhood Commercial (C-1), Agriculture General (AG), Residential Suburban (RS), and Forestry Recreation (FR) with combining zone Special Building Site of 40 acres (B-5(40)). The FR designation is similar to AG but it also allows for public and private noncommercial recreational uses, including golf courses and public stables.

Figure 4-2: Briceland CSD Land Use



Growth and Population

According to a recent inspection report prepared by the California State Water Resources Control Board, the population of the District in 2020 was approximately 75². However, based on 2020 Census data and the District's boundary, GIS analysis estimates the current population to be approximately 40³. Accurate population data can be difficult to obtain in remote rural areas. However, As of February 2023, the population is 51 as determined by District personnel. The District has looked into conducting an official Median Household Income Survey but will need to be in active pursuit of a new grant in order to have that survey done by the Rural Community Assistance Corporation (RCAC). Based on the estimated population and historical growth for the area, it is unlikely the District will grow substantially over the next five to ten years.

Disadvantaged Unincorporated Communities

The ACS 2020 5-year last available estimated MHI for the Briceland area is ~~the ACS 2019 5-year estimate of \$63,504⁴, which This~~ is 81 percent of the estimated 2020⁵ California MHI of ~~\$78,672⁶~~ which may indicate that the District does not qualify as a DUC. However, the area of consideration for this estimate is substantially larger than the District and includes a substantial margin of error. Based on the North Coast Resource Partnership (NCRP) mapping data tools⁵, the Briceland CSD is mapped as an Severally Severely Disadvantaged Community, ~~an~~ Economically Distressed Area but does not qualify as an , and a Severely Economically Disadvantaged Community. ~~The Humboldt County General Plan also has mapped Briceland as an Unincorporated Legacy Community⁶. An informal survey conducted by District personnel indicates the Median Household Income of Briceland residents is approximately \$37,600, which qualifies the area as a Severely Economically Disadvantaged Community. As mentioned previously, an Income Survey would help confirm the disadvantaged status of the Briceland community.~~

Hazards

As noted previously, the community of Briceland is surrounded by forested lands and rolling hillsides. Due to this setting, the area may experience several different types of hazards including wildfire, earthquakes, landslides, and flooding.

The entire District and surrounding areas are within state responsibility area (SRA – where the state of California is responsible for wildfire protection) and are designated as a high fire severity zone⁹. In August 2015, the Horse Fire burned 146 acres approximately 10 miles west of Briceland and 6 miles northeast of Shelter Cove⁷. In 2008, the Paradise Fire burned over 1,000 acres approximately 6.5 miles to the west of the District. The seasonally staffed CAL FIRE Thorn Station is the closest state wildland unit, ~~at~~ located approximately five miles from the District. CAL FIRE also dispatches the Briceland Volunteer Fire Department that is located within Briceland and has extensive training in wildland fire control. Due to the high fire danger in the area, it is important that local fire service agencies and residents have ~~a~~ reliable sources of water. The

² State Water Resources Control Board: Division of Drinking Water, Briceland Community Service District Inspection. Print.

³ U.S. Census American Community Survey (ACS) 2015-2019 5-year estimates.

⁴ U.S. Census American Community Survey (ACS) 2016-2020 5-year estimates, Table S1901 for Census Tract 115.01. MHI reported at \$63,504 with a margin of error of +/- \$18,447 for a MHI range of \$45,057 to \$81,951.-

⁵ North Coast Resource Partnership. <https://northcoastresourcepartnership.org/data/>

⁶ Humboldt County, Legacy Communities. <https://humboldt.gov.org/DocumentCenter/View/78835/2019-Housing-Element---Legacy-Community-Detail-PDF?bidId=>

⁷ CalFire, Horse Fire Incident. Accessed April 22, 2022 from <https://www.fire.ca.gov/incidents/2015/8/18/horse-fire/>

Mattole Restoration Council has been coordinating with local fire departments to plan and install rainwater catchment storage tanks for local volunteer fire departments in the Mattole and Eel watersheds. In addition, the Briceland Volunteer Fire Department recently received \$205,251 in Community Wildfire Defense Grant funding for a Fire Hazard Reduction Project to create a Fire Hazard Reduction Crew, conduct roadside clearance and improve fuel breaks along otherwise unmaintained roads, creating safer routes for emergency response and evacuation and reducing the chance of roadside ignitions.

In addition to wildfires, earthquakes are a known hazard in the area. The Garberville-Briceland fault runs through the District and other major faults including the Russ fault and King Range thrust are ~~in~~ located within the region. On December 20, 2021, an earthquake with an initial magnitude of 5.7 took place near Petrolia. This magnitude took place 11 seconds before the main energy release, a 6.2 magnitude. A seismic station located at the Briceland Vineyard, which lies just northeast of the District boundary, recorded an intensity of 5.7. Some residents in the area experienced strong shaking but very little to no damage⁸.

Other hazards including 100-year flood plains mapped along Redwood and Somerville Creeks and landslides may occur in or around the District. Landslides in the steep terrain of the spring-fed water collection area could conceivably cover the collection box. Landslides in the area may also impact travel in the area and reduce the District's ability to respond quickly to system issues.

4.2 MUNICIPAL SERVICES

Water Services

Briceland CSD receives water from the headwaters of an unnamed creek that is a tributary to Miller Creek. The source capacity can vary from 5 gallons per minute (gpm) in the late summer to 20 gpm or more in winter. The capacity is low for the size of the District, but staff continually checks the clear well levels during the summertime to ensure there is adequate supply. The District plans to install 100,000 gallons of additional water storage which will help compensate for overall low capacity.

The water system relies on gravity flow from source to consumer. Raw water is collected by a concrete collection box located at the headwaters of the unnamed creek and piped 0.9 miles to a "T" junction. One leg of the junction goes to the treatment plant, and the other goes to a series of three fire storage tanks. When the source flow is high, but demand is low, water will flow to the fire storage tanks or back into the streambed.

Water flowing to the treatment plant first enters into slow sand filters. After flowing through the sand filters, water is injected with chlorine and flows to a clear well for adequate chlorine contact time before entering the distribution system.

The District currently has four storage tanks - the clear well tank and the three fire storage tanks. The clear well tank is a 42,000 gallon concrete tank located at the treatment plant. The fire storage tanks consist of two 5,000 gallon HDPE tanks and one 8,000 gallon steel tank all located at the treatment plant. 100,000 gallons of new water storage is planned to be constructed in

⁸ USGS, M 6.2 – 7km N of Petrolia, CA. Accessed April 19, 2022 from <https://earthquake.usgs.gov/earthquakes/eventpage/nc73666231/executive>

the summer of 2023 and will be used for fire and treatment plant storage when the creek's source capacity is low.

The District currently has 27 service connections and serves a population of approximately 51 plus a community center, the firehouse, and two schools as of 2023. In 2018, the District produced a total of 2,578,797 gallons of water. The recorded maximum month, as of the January 2020 inspection, was in September of 2019 at 285,892 gallons⁹. Utilizing the lowest source supply of 5 gpm, the District could receive as little as 216,000 gallons over the course of a month. This suggests that the District currently does not have enough supply to meet maximum demands. However, the addition of new storage tanks would allow the District to store water for use during low flow periods. The District is operating under a moratorium on new connections imposed by the District Board of Directors that has been in effect for many years reflecting the lack of water supply. There are at least two on the waiting list for new connections. However, the fire station was most recently connected to the system in order to provide a more reliable source of water for fire protection and better support the interests of the community.

State Water Resource Control Board

During the last routine inspection conducted by the SWRCB on July 1, 2020, there were a number of items listed as deficiencies which included the following:

1. Perform cross-connection control survey and assessment due by May 29, 2020.
2. Ensure all connections needing a backflow device have one installed due August 28, 2020.
3. Review current cross connection control ordinance and update if needed due August 28, 2020.
4. Develop a Surface Water Treatment operations plan, submit to Department of Drinking Water (DDW) due May 29, 2020.
5. Complete the system component's data sheet, submit to DDW due April 3, 2020.
6. Update the existing treatment system schematic, provide DDW with a copy due April 3, 2020.
7. Begin recording and submitting monthly contact time (CT) parameters and calculations to DDW due March 1, 2020.
8. Maintain a chlorine residual of 0.5ppm, always maintain a minimum of 21,000 gallons in the clear well, begin recording tank levels on the monthly monitoring records due March 1, 2020.
9. Provide the State Water Resources Control Board (SWRC) office with a statement of the District's intentions and timeframe for complying with Section 64659 of the regulations due March 30, 2020.
10. Provide the DDW with a timeframe for the installation of a master meter after the clear well due March 30, 2020.
11. Develop an emergency disinfection plan, submit to DDW due April 3, 2020.
12. Secure clear well roofing due March 13, 2020.
13. Install a float switch in the storage tank to prevent overflow of chlorinated water into the environment due April 3, 2020.

⁹ State Water Resources Control Board, Briceland CSD Public Water System Inspection, February 27, 2020.

14. Inspect the clear well and provide the details to DDW, inspect clear well weekly and make note of inspections on the monthly monitoring form, add clear well inspection schedule to the operations plan due immediately.
15. Replace concrete clear well.
16. Build an additional treated water storage tank.
17. Calibrate turbidimeter quarterly due immediately.

Since the time of this inspection, the District has been working on implementing the recommended actions. The grant funded projects planned to be completed in summer [2023](#) [2024](#) will address many of the items listed above (see Grant Funding under Financial Overview). The District has also completed a cross connection survey which resulted in only one potential cross connection which currently has a backflow device installed and is inspected annually. The clear well tank was also recently inspected and found to be in very good condition with little to no sediment¹⁰. The District will continue to address issues as time and funding allows.

Other Service Providers

Fire Protection and Emergency Response

According to the South County Regional Fire Services MSR, the Briceland FPD was formed in 2012, and has been serving the Briceland area since 1976 as the Beginnings or Briceland Volunteer Fire Department. They provide fire suppression, emergency medical aid, and other emergency response services [to a 40 square mile area of densely forested and rugged terrain, with many residents living several miles away from county-maintained roads.](#)

The FPD's boundary borders the Garberville FPD, Whitethorn FPD, Telegraph Ridge FPD, and Salmon Creek FPD. The Briceland FPD entered into an agreement with Telegraph Ridge FPD for them to provide fire and emergency services to the Crooked Prairie area. This agreement included a provision for the Telegraph Ridge FPD to absorb the Crooked Prairie fire station.

The Humboldt County Fire Chiefs' Association 2020 Annual Report states that the Briceland FPD had 31 volunteers and 21 auxiliary [personnel](#). The 2020 reported incident responses included four vegetation fires, two vehicle accidents, four medical, one hazmat/menace, four public assistance, one other fire, and 10 other services.

[As mentioned in the Hazards section, Briceland VFD received funding from the USDA Community Wildfire Defense Grant program to construct around six miles of shaded fuel break along critical access roads, providing improved emergency access and evacuation routes for hundreds of rural residents. Together with other wildfire defense projects in adjacent districts, the District hopes to greatly reduce the risk of catastrophic wildfire in southern Humboldt County.](#)

4.3 GOVERNANCE & FINANCE

Governance

Briceland CSD is an independent special district served by a five-member Board of Directors that is elected to four-year terms. Board meetings are held every 2nd Monday of odd number

¹⁰ Briceland CSD, Personal Communication with C. Anderson. November 8, 2022. Email.

months at 4:30pm. Meetings are held at the Beginnings Community Center located at 5 Cemetery Road in Briceland unless otherwise noted on the agenda.

Table 4-2: Board of Directors

| Board Member | Title | Term |
|----------------------|---------------------|-----------|
| Joaquin Courtemanche | President | 2020-2024 |
| Chestine Anderson | Secretary/Treasurer | 2020-2024 |
| Jim Courtois | Board Member | 2022-2026 |
| Ellie Huber | Board Member | 2022-2026 |
| Kim Nelson | Board Member | 2022-2026 |

Staffing

Briceland CSD does not have any regular staff and is run by volunteers in the community and the Board of Directors. Stipends are provided to the current plant operator to help offset personal costs associated with maintaining the plant and to a former board member who oversaw plant operations for many years.

Accountability and Transparency

Briceland CSD does not maintain a website. In order to increase ease of access, it would be beneficial to create a website where ~~by they can post the~~ board agendas, ~~the~~ board minutes, District financials, and other important documents/ notices can be posted and available for the general public. However, as there are several households in the district who do not have internet service and there is currently no one available to create and monitor a website, the District has elected to physically post agendas, minutes, financials, and other important documents/notices related to District business. In order to come into compliance with SB 929, the District must annually adopt a resolution of hardship stating the reasons why it is not practical or feasible for the District to maintain a website.

Board agendas and notices are posted at the bus stop in downtown Briceland at least 72 hours in advance of scheduled Board meetings. Meetings of the Board of Directors are subject to the Ralph M. Brown Act which requires agendas must be posted at least 72 hours in advance of scheduled Board meetings in a location that is freely accessible to members of the public.

Financial Overview

Briceland CSD is primarily funded by fees for services. Since Briceland CSD was formed after the passage of Proposition 13 in 1978, the District does not receive a share of the one percent ad valorem property tax. The District relies on fees for services, and recently updated its rates approved a water rate increase on June 20, 2022. The District charges an annual fee of \$600 per connection which is charged on the property owner's annual tax bill. The new rates provide for a \$30 increase each year for a 5-year period. Since there are no regularly paid staff, the District's largest expense is for operating supplies and system maintenance.

Currently, Briceland CSD does not adopt an annual budget or conduct regular audits. Budgeting is conducted on an informal basis based on knowledge of the District's typical revenues and expenses. A summary of the informal budget for FY 2020-21 to FY 2022-23 is provided in Table 4-3. Annual revenue and expense reporting is provided to the State

Controller's Office which is summarized in Table 4-4. Based on the information gathered from the Controller's Office, the District has been operating at a loss for most of the years reviewed.

Financial transactions for the District are primarily handled by the Humboldt County Auditor-Controller's Office ~~of Humboldt County~~. They maintain the revenue and expenditure accounts and pay claims submitted by the District. Unfortunately, due to a prior backlog at the County Auditor-Controller's Office, the FY2021-22 transactions have not been closed out as of February 2023 which has impacted the year-end financial transaction report submitted to the State Controller's Office. Additionally, grant funding is not tracked separately but is included in the District's overall expenses and revenues. Since reimbursements for grant projects can take several months to receive, revenues may be reported in a different fiscal year than expenses and show a greater loss for the District. According to the District, normal operating expenses are being covered completely by annual fees.

Table 4-3: Briceland Annual Budget Summary

| Category | FY 20-21 | FY 21-22 | FY 22-23 |
|---------------------------|-----------------|-----------------|-----------------|
| Revenues | | | |
| Fees for Services | \$11,136 | \$11,135 | - |
| Donations | - | \$0 | - |
| Other | \$325 | \$0 | \$16,012 |
| Total Revenues | \$11,461 | \$11,135 | \$16,012 |
| Expenditures | | | |
| Insurance | \$1,175 | \$1,249 | - |
| Operation Supplies | \$2,400 | \$2,554 | \$377 |
| Memberships & Fees | \$518 | \$479 | - |
| Operators | \$825 | \$825 | - |
| Other | \$920 | \$2,963 | \$133 |
| Total Expenditures | \$5,838 | \$8,070 | \$510 |
| Gain/ (Loss) | \$5,623 | \$3,065 | \$15,502 |

Table 4-4: Briceland CSD State Controller Summary

| Category | 2017 | 2018 | 2019 | 2020 | 2021 |
|------------------------|------------------|------------------|------------------|------------|-----------------|
| Revenues | | | | | |
| Operating | \$5,880 | \$10,864 | \$9,899 | - | \$10,919 |
| Non-Operating | \$529 | \$615 | \$514 | - | \$24,729 |
| Total Revenue | \$6,409 | \$11,479 | \$10,413 | N/A | \$35,648 |
| Expenses | | | | | |
| Operating | \$11,979 | \$19,458 | \$20,046 | - | \$13,576 |
| Non-Operating | - | - | - | - | \$12,025 |
| Total Expense | \$11,979 | \$19,458 | \$20,046 | N/A | \$25,601 |
| Net Gain/(Loss) | (\$5,570) | (\$7,979) | (\$9,633) | - | \$10,047 |

Special Districts have several financial and reporting requirements as required by law. Regarding the annual budget process, Government Code §61110 states that a preliminary and final budget must be adopted for the District on or before July 1 of each year. Government Code §53901 states that within 60 days after the beginning of the fiscal year each local agency must

submit its budget to the County Auditor. These budgets are to be filed and made available on request by the public at the County Auditor-Controller's Office. The District is encouraged to begin adopting budgets for the fiscal year (July 1 to June 30) and begin filing regularly with the County Auditor-Controller.

State law also requires each district to file an annual audit report with the County Auditor-Controller. According to Government Code §61118, the Board of Directors shall provide for regular audits of the District's accounts and records and shall provide for annual financial reports to the State Controller. All special districts are required to submit annual audits to the County within 12 months of the completion of the fiscal year unless the Board of Supervisors has unanimously approved a biennial or five-year schedule¹¹. Additionally, Government Code §26909(a)(1) states that the County Auditor shall either prepare the audit or contract with a certified public accountant to complete the annual audit for districts not in compliance with their audit requirement at the expense of the special district. However, the Auditor-Controller's Office has not enforced this requirement for special districts out of compliance.

Since Briceland CSD is a volunteer district with limited capacity for conducting regular audits, it is recommended that the Board of Directors coordinate with the Humboldt County Auditor-Controller's Office to determine whether request—an alternative audit schedule can be requested from the County Board of Supervisors. This would may help ensure that regular audits are be conducted which may be are necessary for future grant requests.

Grant Funding

The District has recently been successful in obtaining several grants to aid with project planning and implementation. They received \$30,000 in US Department of Agriculture (USDA) Technical Assistance to help develop the necessary documentation to support a successful Proposition 1 Integrated Regional Water Management (IRWM) grant application.

In December 2020, the District was awarded over \$1 million in funds through the North Coast Resource Partnership (NCRP) the Proposition 1 IRWM grant program to implement a Water Supply Enhancement Project grant totaling over \$1 million. Funding through this program~~project~~ will enable the District to conduct several system upgrades including construction of 100,000 gallons of new water storage, new 2-inch and 6-inch water transmission lines, site fencing for water storage and treatment facilities, low water and high flow alarms, and numerous other small system components to improve reliability of the system.

Additional funding of over \$500,000 was awarded through the NCRP Urban and Multibenefit Drought Relief Grant program to cover a funding gap for the original Water Supply Enhancement Project, and to pay for will allow the District to install a new transmission line from the raw water source to the treatment facility and complete additional treatment plant upgrades to improve water system efficiency. Project construction is planned through summer of 2024.

¹¹ California Government Code Section 26909 (5)(b)(1-3).

4.4 BRICELAND MSR DETERMINATIONS

As set forth in Section 56430(a) of the CKH Act- In order to prepare and to update the SOI in accordance with Section 56425, the commission shall conduct a service review of the municipal services provided in the county or other appropriate area designated by the commission. The commission shall include in the area designated for a service review the county, the region, the sub-region, or any other geographic area as is appropriate for an analysis of the service or services to be reviewed, and shall prepare a written statement of its determinations with respect to each of the following:

(1) Growth and population projections for the affected area

a) The current District population is estimated by Briceland CSD staff to be 51 residents. The area has seen minimal growth over the last five to ten years and is not expected to grow substantially in the near future.

(2) The location and characteristics of any disadvantaged unincorporated communities within or contiguous to the sphere of influence

a) The estimated 2020 MHI for Census Tract 115.01, which includes the Briceland area, was reported to be \$63,504 which is 81 percent of the 2020 California MHI which may indicate the District does not qualify as a DUC. However, the census tract covers a substantially larger area than Briceland CSD and is not a valid representation of the District.

b) The NCRP has mapped the Briceland area as a Severely Economically Disadvantaged Community and Humboldt County has designated Briceland as a legacy community in their General Plan. This indicates that the District and some of the surrounding area is likely a DUC.

(3) Present and planned capacity of public facilities and adequacy of public services, including infrastructure needs or deficiencies

a) Briceland CSD is a retail water service provider that has 27 service connections including a community center, firehouse, and two schools.

b) The District obtains water from an unnamed creek that varies from 5 gpm in late summer to 20 gpm in the winter. This is inadequate to meet maximum demands during the summer and has resulted in a moratorium on new connections.

c) Briceland CSD currently has 60,000 gallons of water storage and is planning on constructing a new 100,000 gallon tank. This storage will allow the District to store additional water for use during summer months when water supply is limited.

d) The District has been successful in obtaining grant funding to make critical water system improvements.

(4) Financing ability of agencies to provide services

a) The District is primarily funded by fees for services. Customers are charged an annual fee of \$600 per connection which is included on the property owners' annual tax bill. With 27 connections, this results in an estimated annual revenue of \$16,200.

b) Briceland CSD is entirely volunteer run. As such, the District's expenses are generally limited to operating supplies and system maintenance, which varies from year to year.

c) Briceland CSD does submit financial reporting documents to the State Controller's office on an annual basis. According to these records, the District saw an overall loss in three of the four years reviewed which may indicate that there are currently not enough revenues to cover District expenses.

d) The District does not regularly adopt budgets or conduct audits due to limited volunteer capacity and funding. The District is encouraged to work with the County Auditor-Controller and/or a Certified Public Accountant to bring the District into compliance with special district reporting requirements.

(5) Status of and, opportunities for, shared facilities

a) Redway CSD is located approximately five and a half miles east of Briceland along Briceland Road. Due to the close proximity, there may be an opportunity for shared staffing.

(6) Accountability for community service needs, including governmental structure and operational efficiencies

a) Briceland CSD is governed by a five-member Board of Directors that is elected to four-year staggered terms. Meetings are held on the second Monday of odd numbered months at the local community center.

b) Due to the remote and rural nature of the District, there is limited opportunity or need for online postings. As such, the District elects to post important information, such as board agendas and other notices, at the bus stop at Orchard Road in Briceland.

(7) Any other matter related to effective or efficient service delivery

a) Since the District has limited funding resources to plan for capital improvement projects, grant funding is an important resource to ensure that system maintenance and upgrades take place. The District is encouraged to continue to work with the NCRP and other funding agencies and technical assistance providers to pursue planning, design and construction funding for capital projects.

b) Briceland CSD's adopted sphere of influence is coterminous with its jurisdictional boundary, which indicates that there is no anticipated need for services outside the boundaries of the agency. Considering the District provides water service to existing residential uses on APN 220-061-028, which is developed and cannot be further subdivided under current land use and zoning, a sphere amendment is proposed to include this parcel within the District's SOL.

4.5 BRICELAND SOI DETERMINATIONS

In order to carry out its purposes and responsibilities for planning and shaping the logical and orderly development of local governmental agencies to advantageously provide for the present and future needs of the county and its communities, the commission shall develop and determine the sphere of influence of each local agency, as defined by G.C. Section 56036, and enact policies designed to promote the logical and orderly development of areas within the sphere. In determining the sphere of influence of each local agency, the commission shall consider and prepare a written statement of its determinations with respect to the following:

(1) Present and planned land uses in the area, including agricultural and open-space lands.

a) Land uses within the District are mostly designated Rural Community Center (RCC) with limited Residential Agriculture (RA) designated lands. Lands surrounding the District are almost entirely Residential Agriculture with a small portion of Agriculture. Based on the presence of these low-density agricultural uses, it is unlikely that more intense development will occur in the area.

(2) Present and probable need for public facilities and services in the area.

a) The existing residents in the area served by Briceland CSD require a regular source of drinking water for day to day activities.

b) There is one parcel located outside the District boundary that is served by Briceland CSD. This parcel (APN 220-061-028) was historically served by the Briceland water system prior to formation of the District in 1989. The subject parcel is 12.52 acres in size, has a General Plan land use designation of Residential Agriculture (RA 5-20) and is zoned Forestry Recreation (FR-B-5(10)), and is improved with two dwellings. The water meter is located on the northeast corner of the parcel near Miller Creek Road and Briceland Throne Road.

c) The Briceland FPD requires a regular source of water for fire suppression activities. While Briceland CSD has a limited source of water, they can provide enough water in dedicated storage tanks for the fire department.

(3) Present capacity of public facilities and adequacy of public services that the agency provides or is authorized to provide.

a) Briceland CSD is currently operating at capacity and is unable to provide services to any new connections.

b) The District is in the process of constructing additional water storage to help meet peak demands during the dry summer months. This additional capacity will ensure existing customers have adequate water supply to meet their needs. However, this will not allow the District to extend services to additional customers.

(4) Existence of any social or economic communities of interest in the area if the commission determines that they are relevant to the agency.

a) The nearest major town where supplies and additional services can be obtained is Redway, located 5.5 miles east along Briceland Road. Additional facilities and services are located in Garberville which is an additional two miles south of Redway.

(5) For an update of a sphere of influence of a city or special district that provides public facilities or services related to sewers, municipal and industrial water, or structural fire protection, the present and probable need for those public facilities and services of any disadvantaged unincorporated communities within the existing sphere.

a) Water services are provided by Briceland CSD to customers within the District's boundary. Outside the District, residents are typically served by onsite wells. Wastewater is also provided by onsite systems. Fire and emergency response services are provided by Briceland VFD through the Briceland FPD.